

Tom a'Chaisteal Dun



Photomontage view with proposed OHL

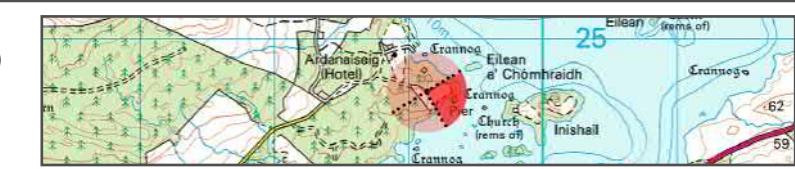
**Figure 9.10**  
CH7 : Tom a'Chaisteal Dun, Teatle Water (SM 4209)

**Creag Dhubh to Dalmally 275 kV Connection**



OS reference: 213012 725029  
Eye Level: 102m AOD  
Direction of view: SE  
Horizontal field of view: (90° cylindrical projection)

Camera: Nikon D750  
Lens: 50mm (Nikon AF 50mm f/1.4)  
Camera height: 1.5m AGL  
Date: 25/10/2021







Photomontage view with proposed OHL



OS reference: 213012 725029  
 Eye Level: 102m AOD  
 Direction of view: SW  
 Horizontal field of view: (90° cylindrical projection)

Camera: Nikon D750  
 Lens: 50mm (Nikon AF 50mm f/1.4)  
 Camera height: 1.5m AGL  
 Date: 25/10/2021



**Figure 9.10**  
 CH7 : Tom a'Chaistel Dun, Teatle Water (SM 4209)  
 Creag Dhubh to Dalmally 275 kV Connection





Tom a'Chaisteal Dun

Photomontage view with proposed OHL

**Figure 9.11**  
CH8 : Dychlie Deserted Crofts (SM 5149)  
**Creag Dhubh to Dalmally 275 kV Connection**



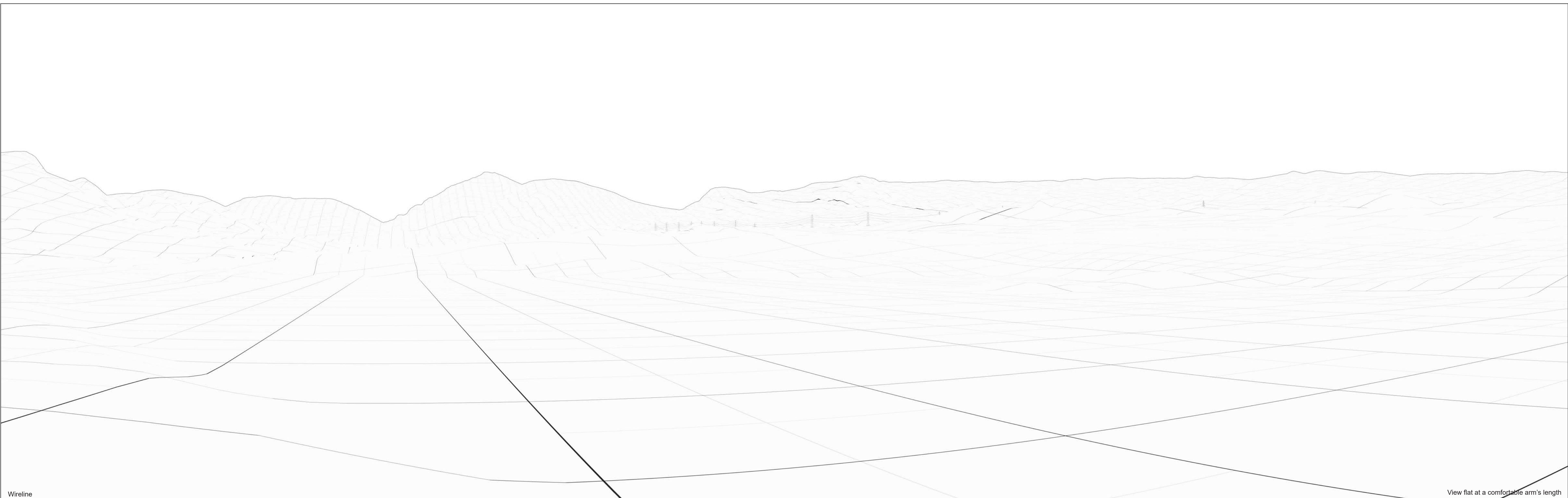
OS reference: 217181 724425  
Eye Level: 102m AOD  
Direction of view: SE  
Horizontal field of view: (90° cylindrical projection)

Camera: Nikon D750  
Lens: 50mm (Nikon AF 50mm f/1.4)  
Camera height: 1.5m AGL  
Date: 24/08/2021 13:33





**This Page Intentionally Left Blank**



Wireline

View flat at a comfortable arm's length

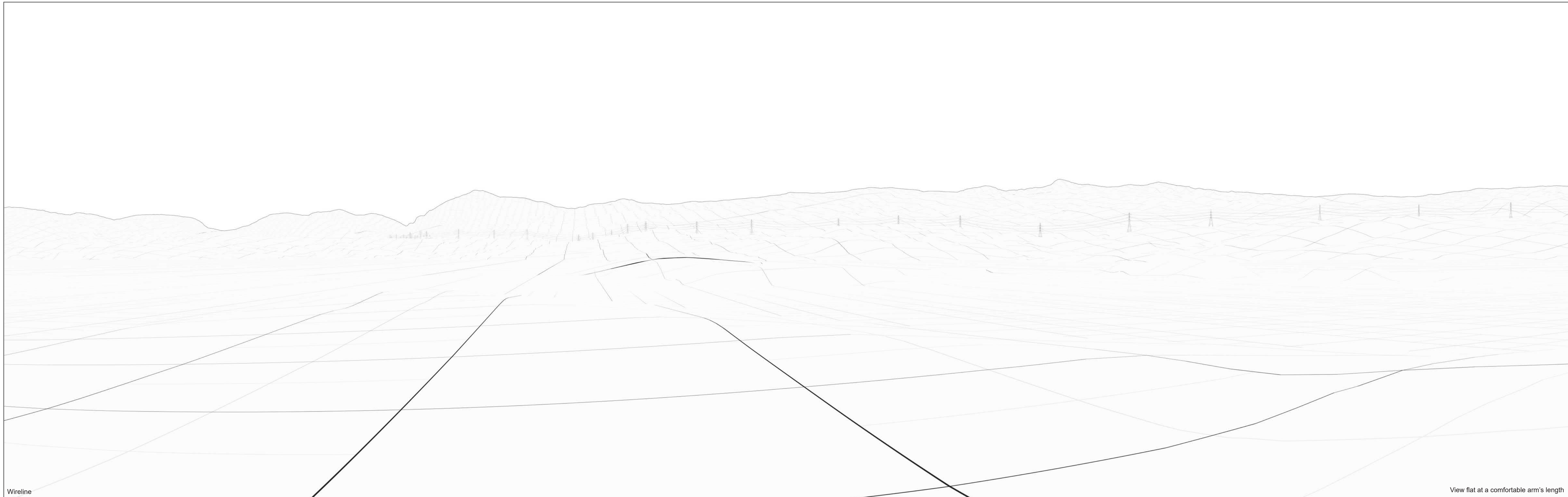
**Figure 9.12**  
 CH9 : Kilchurn Castle (SM 90179 & PiC)  
**Creag Dhubh to Dalmally 275 kV Connection**



OS reference: 213332 727641  
 Eye Level: 102m AOD  
 Direction of view: SE  
 Horizontal field of view: (90° cylindrical projection)

Camera: Nikon D750  
 Lens: 50mm (Nikon AF 50mm f/1.4)  
 Camera height: 1.5m AGL





Wireline

View flat at a comfortable arm's length



OS reference: 209063 724603  
 Eye Level: 102m AOD  
 Direction of view: SE  
 Horizontal field of view: (90° cylindrical projection)

Camera: Nikon D750  
 Lens: 50mm (Nikon AF 50mm f/1.4)  
 Camera height: 1.5m AGL  
 Date: 25/10/2021



**Figure 9.13**  
 CH10 : Kilchurn Castle (SM 90179 & PIC)  
**Creag Dhubh to Dalmally 275 kV Connection**





Wireline

View flat at a comfortable arm's length

**Figure 9.14**  
CH11 : Cladich Chambered Cairn (HER 1778)

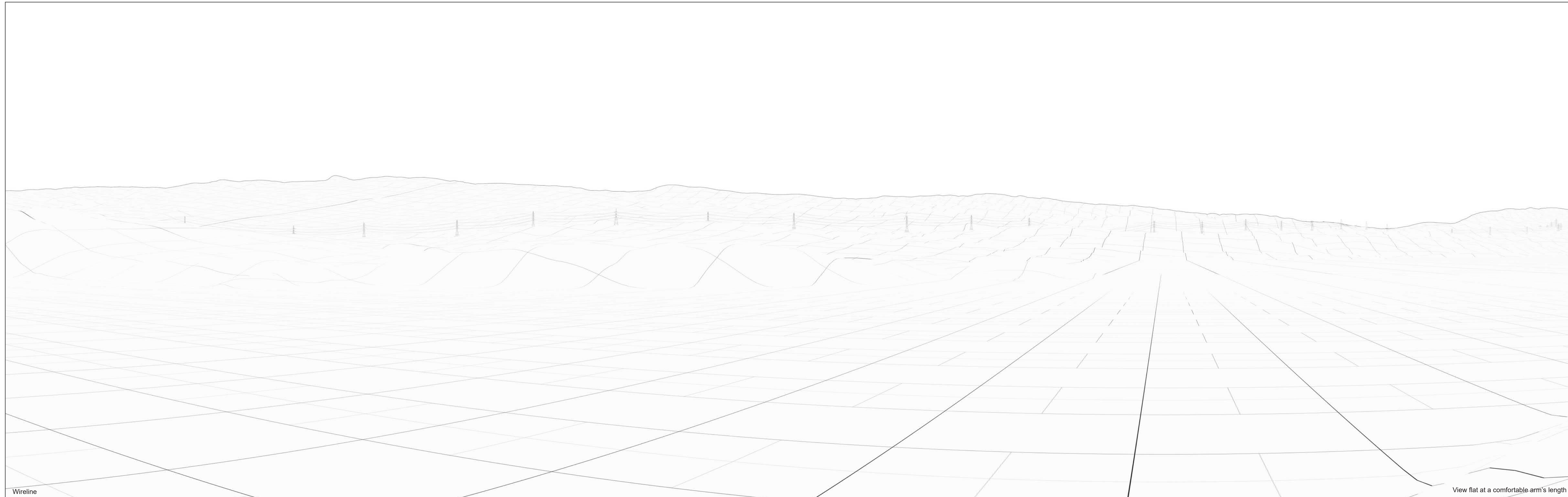
**Creag Dhubh to Dalmally 275 kV Connection**



OS reference: 210037 722244  
 Eye Level: 102m AOD  
 Direction of view: SW  
 Horizontal field of view: (90° cylindrical projection)

Camera: Nikon D750  
 Lens: 50mm (Nikon AF 50mm f/1.4)  
 Camera height: 1.5m AGL





Wireline

View flat at a comfortable arm's length



OS reference: 211597 726725  
 Eye Level: 102m AOD  
 Direction of view: SE  
 Horizontal field of view: (90° cylindrical projection)

Camera: Nikon D750  
 Lens: 50mm (Nikon AF 50mm f/1.4)  
 Camera height: 1.5m AGL



**Figure 9.15**  
 CH12 :St Conan's Church of Scotland (LB 4700)  
 Creag Dhubh to Dalmally 275 kV Connection





Photomontage view with proposed OHL

**Figure 9.16**  
CH13 : Tom a'Chaistel Dun, Teatle Water (SM 4209)

**Creag Dhubh to Dalmally 275 kV Connection**



OS reference: 214430 725860  
 Eye Level: 102m AOD  
 Direction of view: SE  
 Horizontal field of view: (90° cylindrical projection)

Camera: Nikon D750  
 Lens: 50mm (Nikon AF 50mm f/1.4)  
 Camera height: 1.5m AGL







Tom a'Chaisteal Dun

Photomontage view with proposed OHL



OS reference: 214430 725860  
 Eye Level: 102m AOD  
 Direction of view: SW  
 Horizontal field of view: (90° cylindrical projection)

Camera: Nikon D750  
 Lens: 50mm (Nikon AF 50mm f/1.4)  
 Camera height: 1.5m AGL



**Figure 9.16**  
 CH13 : Tom a'Chaisteal Dun, Teatle Water (SM 4209)  
 Creag Dhubh to Dalmally 275 kV Connection